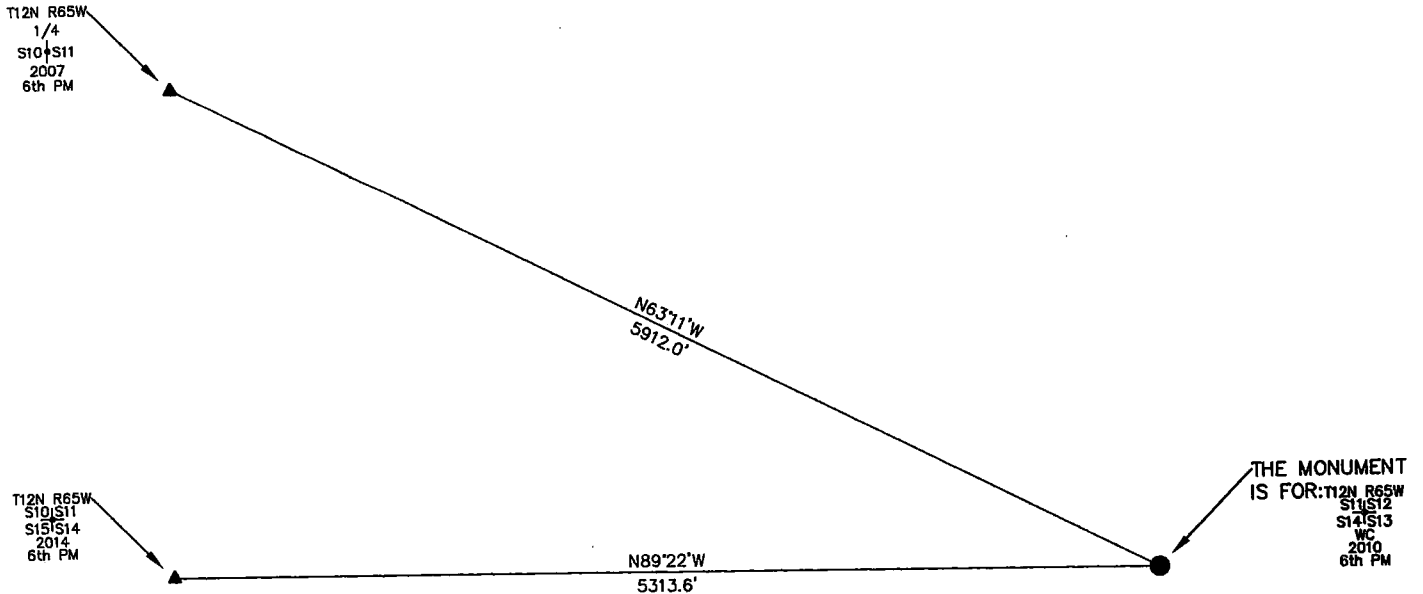


State of Wyoming Corner Record

(In compliance with the CORNER PERPETUATION AND FILING ACT, Wyoming Statutes, 2013 Section 33-29-901 through 33-29-910, and the Rules and Regulations of the Board of Professional Engineers and Professional Land Surveyors)

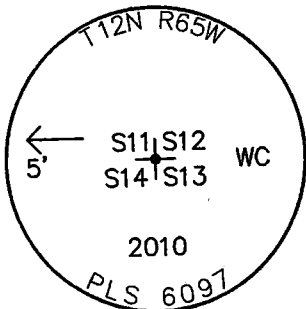
Reverse side of this form may be used if more space is needed.

Record of original survey and citation of source of historic information (if corner is lost or obliterated). Description of corner monumentation evidence found and/or monument and accessories established to perpetuate the location of this corner. Sketch of relative location of monument, accessories, and reference points with course and distance to adjacent corner(s) (if determined in this survey). Method and rationale for reestablishment of lost or obliterated corner.



NOTE:
LINES SHOWN ARE BETWEEN MONUMENTS AND MAY OR MAY NOT BE SECTION OR SECTION SUBDIVISION LINES.

FOUND THE WITNESS MONUMENT FOR THIS CORNER COMMON TO 4 SECTIONS WHICH IS A 2010 2.5" PRIVATE ALUMINUM CAP PROTRUDING 0.1' ABOVE THE GROUND.



CORNER MONUMENT SYMBOLS

- RECORD IS FOR THIS CORNER MONUMENT.
- ▲ A RELATED CORNER OR WC MONUMENT.

SCALE 1"=1000'
(EXCEPT IN TRIVIAL CASES)
BEARINGS ARE RELATED TO WGS 84 WITH GPS OBSERVATIONS
DRAWN BY: D.C.
08/01/19
P.C. A. SHAFFETT

Date of Field Work: 07/24/19 Office Reference: _____

CROSS INDEX DIAGRAM

	1	2	3	4	5	6	7	8	9	10	11	12	13	14	15	16	17	18	19	20	21	22	23	24	25	
A																										
B																										
C																										
D																										
E																										
F																										
G																										
H																										
I																										
J																										
K																										
L																										
M																										

Firm/Agency, Address

UELS, LLC

3313 35TH Avenue

Suite B

Evans, Co 80620

Telephone Number: 970-506-1544

This corner record was prepared by me or under my direction and supervision.

SEAL & SIGNATURE



COLORADO



RECP #: 765641

RECORDED 11/13/2019 AT 9:30 AM BK# 2647 PG# 105
Debra K. Lee, CLERK OF LARAMIE COUNTY, WY PAGE 1 OF 1